

231 Grant Educator Housing

November 2024 – Monthly Construction Update



Activities Performed

Cahill Contractors performed the following activities in October 2024:

- Completion of Elevator structural steel
- Concrete steps poured at East and West Elevations
- Installation of the Backflow Preventor

Upcoming Activities

In November and Early December 2024, Cahill expects to perform the following activities:

- Elevator installation
- Finish Exterior Stucco
- Continue Utility Site work on Birch Street

Construction Schedule

The construction team began work on-site in July 2023. The development is 71% done and the anticipated completion date is May 2025.

Impacts to the community are in line with typical construction. Moderate noise levels and high street parking usage can be expected during work hours (7am-4pm on weekdays and occasionally 9am-6pm on weekends).

Apartment Leasing

Resident applications for leasing are not currently available. There is no waitlist at this time. If you are interested in applying to live at 231 Grant, please visit www.231grant.org and complete the contact form.

Other Nearby Projects

City of Palo Alto Public Safety Building – located at 250 Sherman, construction of the new City of Palo Alto Public Safety Building. Construction began in June 2021.

123 Sherman – proposed construction of new three-story commercial building with two levels of below-grade parking and one level at-grade parking.

Project Team

General Contractor

Cahill Contractors
Phone: 415-572-5698

Project Architect

Van Meter Williams Pollack

Project Developers

Abode Communities
Mercy Housing California

Project Website

www.231grant.org

231 Grant Educator Housing

November 2024 – Monthly Construction Update



Figure 1 – Completed Elevator Divider Screen



Figure 2 – installed Backflow Preventer

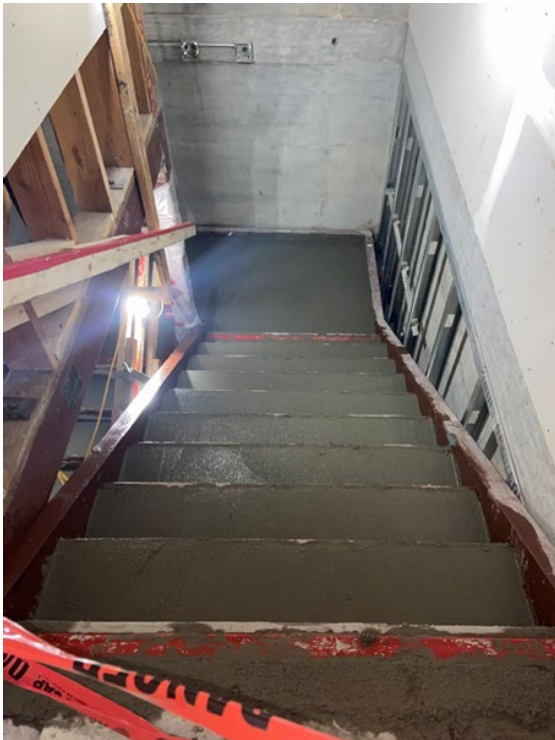


Figure 3 – Freshly Poured Concrete Stairs



Figure 4 – Stucco Finish coat on Elevator Tower

231 Grant Educator Housing

November 2024 – Monthly Construction Update



Figure 5 – Kitchen Soffit Framing



Figure 6 – Installed Corridor Insulation



Figure 7 – Level 1 overhead MEPS