

# 231 Grant Educator Housing

## February/March 2025 – Construction Update



### Activities Performed

Cahill Contractors performed the following activities in January and February 2025:

- Continued installation of second floor courtyard landscaping
- Installation of apartment bathroom cabinetry

### Upcoming Activities

In March, Cahill expects to perform the following activities:

- Continuing Elevator installation
- Begin installation of street level landscaping
- Installation of structural steel for Main staircase

### Construction Schedule

The construction team began work on-site in July 2023. The development is 86% complete and the anticipated completion date is June 2025.

Impacts to the community are in line with typical construction. Moderate noise levels and high street parking usage can be expected during work hours (7am-4pm on weekdays and occasionally 9am-6pm on weekends).

### Apartment Leasing – Lottery Open thru March 6<sup>th</sup>!

The lottery for qualified school staff is now open through the [Doorway Housing Portal](#). If you have questions about your eligibility, please refer to the [231grant.org](#) [INFO Tab](#) for a list of participating districts.

### Other Nearby Projects

[City of Palo Alto Public Safety Building](#) – located at 250 Sherman, construction of the new City of Palo Alto Public Safety Building. Construction began in June 2021.

[123 Sherman](#) – proposed construction of new three-story commercial building with two levels of below-grade parking and one level at-grade parking.

### Project Team

#### General Contractor

[Cahill Contractors](#)  
Phone: 415-572-5698

#### Project Architect

[Van Meter Williams Pollack](#)

#### Project Developers

[Abode Communities](#)  
[Mercy Housing California](#)

#### Project Website

[www.231grant.org](http://www.231grant.org)

# 231 Grant Educator Housing

February/March 2025 – Construction Update



Figure 1 – installation of Courtyard Planters

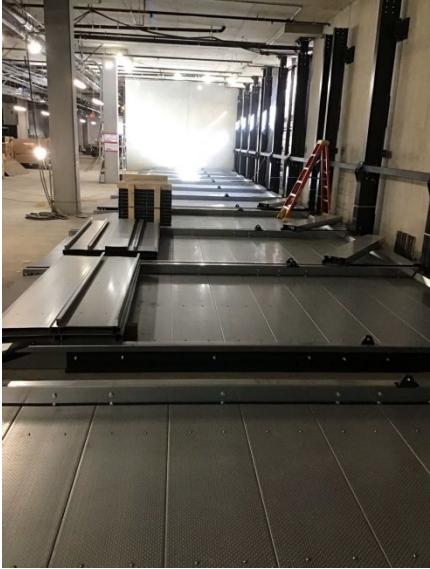


Figure 2 –Installation of parking stacker



Figure 3 – Unit kitchen with cabinetry and installed appliances



Figure 4 – Central staircase structural steel